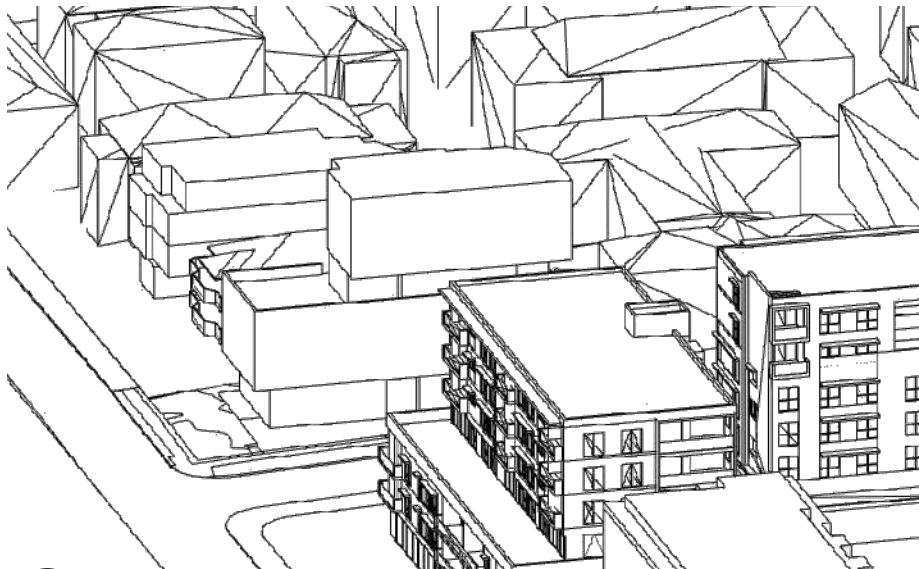


SV0.1 ADG BUILDING MASSING-VIEW FROM SUN- 21/06 - 8:00AM



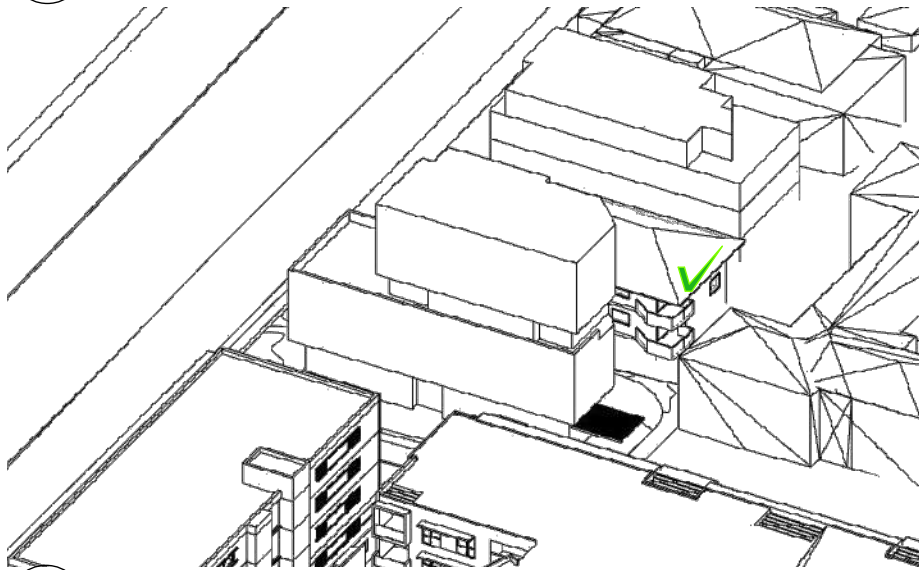
SV1.1 ADG BUILDING MASSING-VIEW FROM SUN- 21/06 - 9:00AM



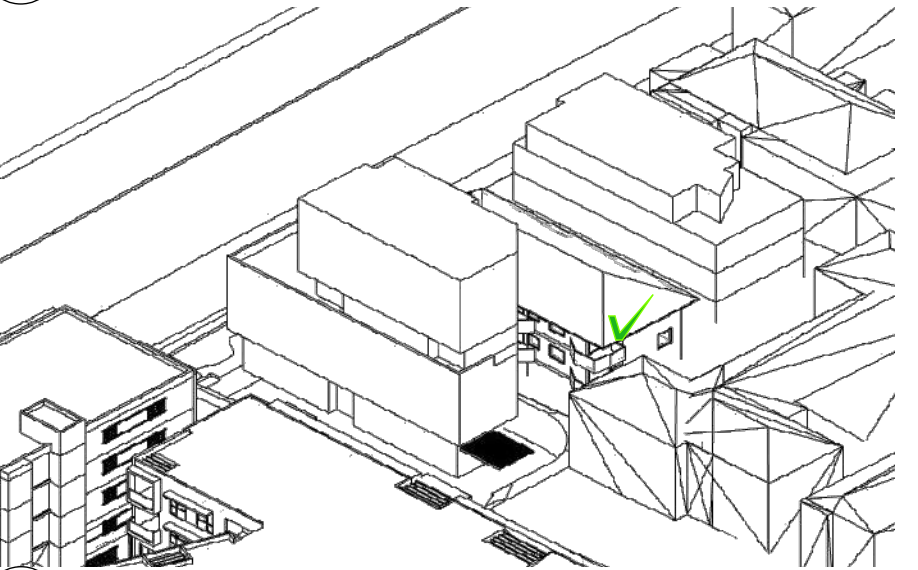
SV2.1 ADG BUILDING MASSING-VIEW FROM SUN- 21/06 - 10:00AM



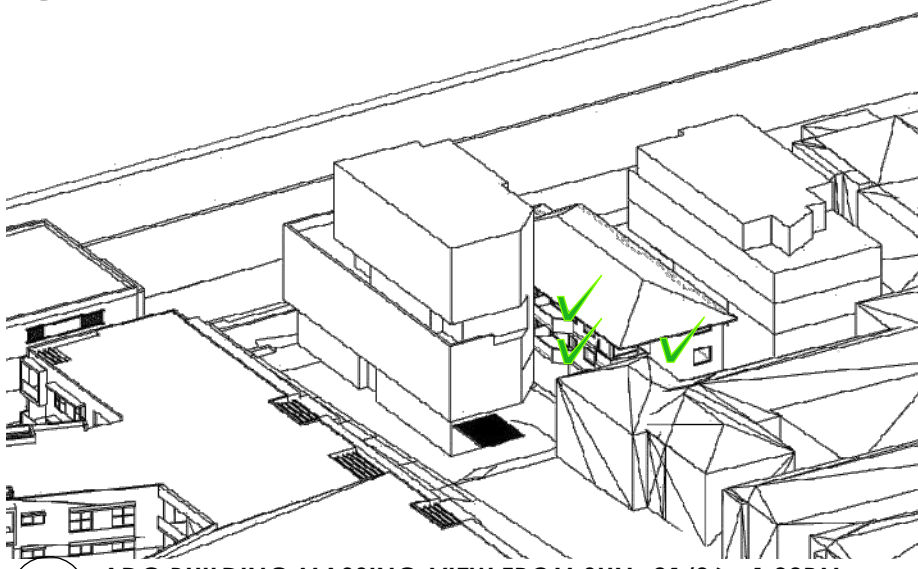
SV3.1 ADG BUILDING MASSING-VIEW FROM SUN- 21/06 - 11:00AM



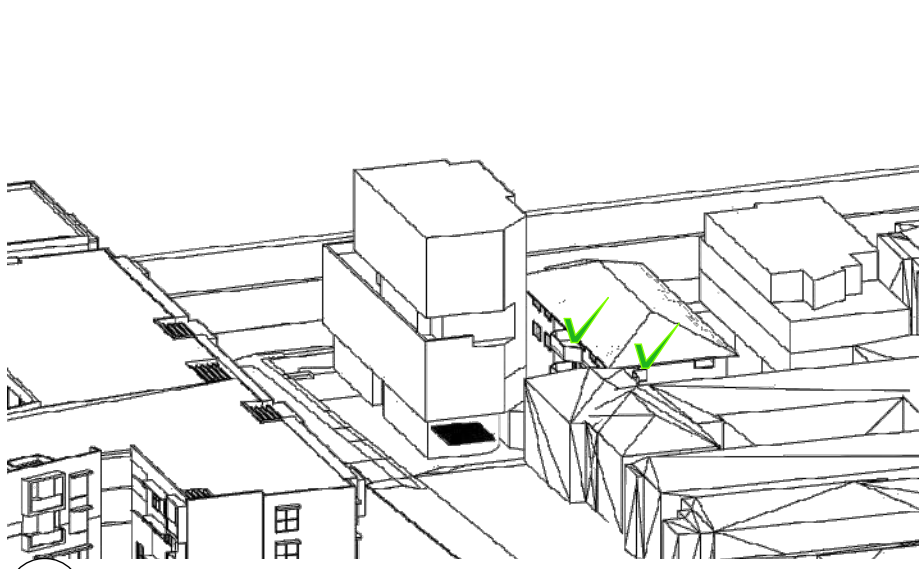
SV4.1 ADG BUILDING MASSING-VIEW FROM SUN- 21/06 - 12:00PM



SV5.1 ADG BUILDING MASSING-VIEW FROM SUN- 21/06 - 1:00PM



SV6.1 ADG BUILDING MASSING-VIEW FROM SUN- 21/06 - 1:00PM



SV7.1 ADG BUILDING MASSING-VIEW FROM SUN- 21/06 - 3:00PM

Table 1 Minimum building separation increases proportionally to the building height

Building height	Separation distance
9 storeys and above	12-24m
Up to 8 storeys	9-18m
Up to 4 storeys	6-12m

✓ UNIT RECEIVING SOLAR